

## TRANSPORT AND STORAGE INSTRUCTIONS FOR STONE-COATED ROOFING SHEETS

### TRANSPORT AND STORAGE

1. Exercise particular caution when handling steel sheets. Sliding the sheets on top of each other or dragging on the substrate can damage the coatings.
2. Under normal conditions, the Product in its original packaging can be stored for about three weeks from the date of release from Blachotrapez warehouse. At this time, it is necessary to separate the sheets from the ground by at least 30 cm, store the Product in a dry and airy place with a slope allowing water to drain off freely. The stored Product requires periodic inspections and visual evaluation in order to eliminate any burns or other damage. Maximum storage period under the above conditions up to six months from the date of release of the Product from the Blachotrapez warehouse.
3. The Product should be stored in a dry place with a constant temperature, protecting it from excessive moisture and air temperature changes. Failure to do so may cause stains on the Product. The Product should be stored by isolating it from aggressively reacting materials, without exposing the sheet to direct sunlight and water (possibility of sheet scalding).
4. If it is necessary to store the Product for a short period of time (e.g. during assembly work) in the open air, the sheets must be angled (in accordance with the direction of the profiling) to allow the moisture to drain off freely from the sheet surface. The sheets must be permeable to air.
5. Ensure that the entire surface of the sheet is permeable to air during storage.
6. The occurrence of damage on the surface of the metal sheets as a result of burning and mechanical damage will cause the dismissal of any complaints.

### CUTTING THE SHEET

It is not allowed to use tools causing thermal effect (sudden increase in temperature), such as angle grinders, to cut through the sheet metal. Suitable tools for this purpose are sheet metal scissors, the so-called guillotine or a low-speed circular saw with a suitable blade for cutting sheets. The use of shears or guillotines with hardened cutting edges is recommended. Make sure that the equipment used for assembly is in good condition and does not cause any material damage.



Fig. 1



Fig. 2

## MAINTENANCE INSTRUCTIONS FOR STONE-COATED ROOFING SHEETS

### MAINTENANCE

1. The coating changes after exposure to climatic conditions in a specific environmental classification. To keep the coatings in the best possible condition, it is necessary to systematically wash and maintain the metal sheet and isolate the Product from contact with materials that cause corrosion or high levels of contamination during the whole period of warranty protection.
2. Ageing of shades under external exposure is allowed.
3. Unwanted changes in the appearance or quality of the sheet may result from exposure of the Product to particularly harsh or severe climatic conditions, such as high levels of UV, direct emissions of harmful fumes or rain-repellent deposits acting on the roof surface.
4. After the installation of the sheet metal, special attention should be paid to damage to covering and remove all swarf, rivets, screws and various building waste. After completion of the installation of the Product, all cut edges (including the factory cut edges) should be properly secured.
5. Any corrosion outbreaks that are found must be immediately treated with a repair kit.
6. It is recommended that after 1 year of use, the roof should be inspected to determine the degree of wear and tear of the sheet metal, to maintain any damage, to remove dirt and deposits. It is also recommended to wash dirt deposits that are not cleaned naturally (as a result of water run-off). The frequency of cleaning and maintenance of the roof should depend on the rate at which it gets dirty, the type of deposits and the environment in which the roof is installed. Only use dedicated detergents and preserving agents to clean and maintain the sheets. The buyer is obliged to document the fact that the maintenance work has been carried out and to submit a proof of the maintenance work at every request from Blachotrapez. It is recommended that the roof maintenance work be carried out by professionals.
7. Remove leaves, grass, soil and other objects from the surface of the Product.
8. Clean areas where dirt and debris accumulates, clean the spots where the covering is not regularly washed away by rainfall, e.g. under stamps.
9. Check regularly and repair local damage that may cause faster damage to the coating or corrosion of the substrate.
10. The installation of the Product should be carried out in such a way as to limit walking on the already fixed sheets, due to the risk of damaging the coatings.
11. When moving on the roof, only step on the panel ends, directly above the roof battens. Avoid stepping in the centre of the panels or at the top of the ribs. Special care must be taken to ensure that the soles of shoes are free from metal filings after the cutting and processing of the metal sheet, or other contamination. Chips and other impurities created during cutting metal sheets can stick to the soles of shoes and damage the coats. It is recommended to use shoes with soft soles.
12. Do not walk on damp sheets for safety reasons, and due to the risk of damaging the surface coats of the Product.



Fig. 3

Failure to comply with the above recommendations may be a reason for rejecting any complaints.  
If in doubt, please contact us by e-mail: [serwis@blachotrapez.eu](mailto:serwis@blachotrapez.eu)

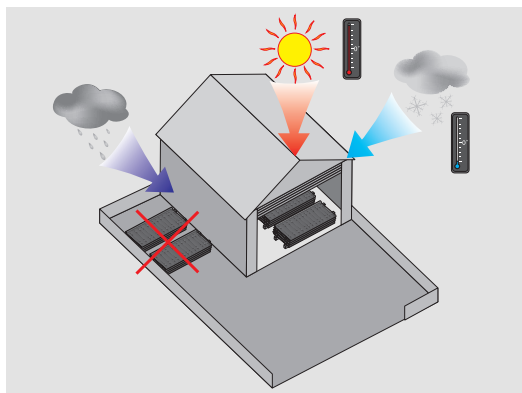
1.

**BTR SYSTEMS**  
The Best Type of Roofing

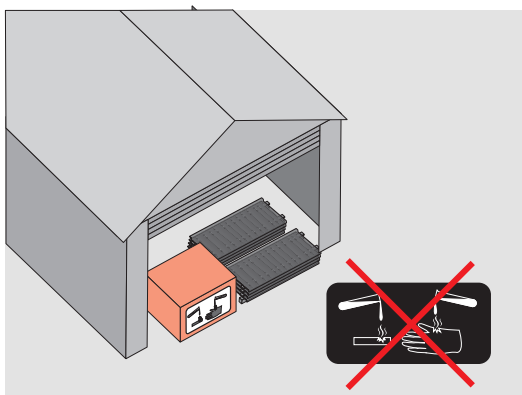
GROUP **BLACHOTRAPEZ**

[www.btrsystems.eu](http://www.btrsystems.eu)

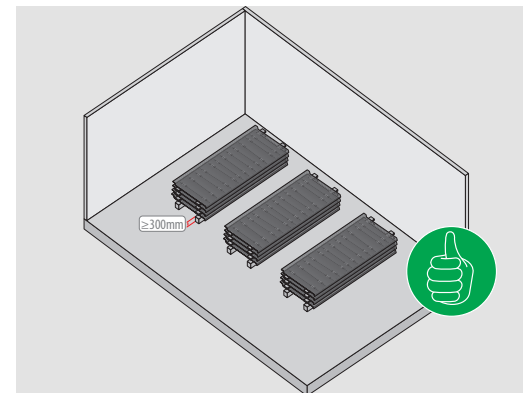
**1.** Store the material in dry and airy rooms. Protect against sudden changes in temperature and humidity.



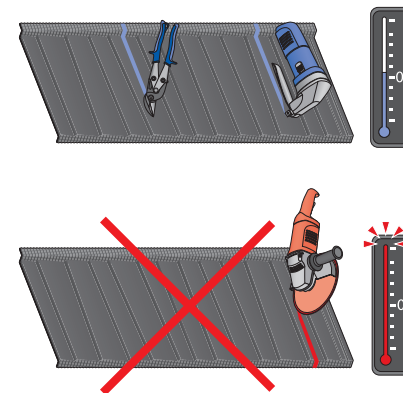
**2.** Do not store near materials that react aggressively.



**3.** Separate the material from the ground. Place a separator between each sheet or place the sheets standing upright, e.g. against a wall.



**4.** The use of tools that create thermal effect is not allowed.



**5.** Avoid sliding pieces of sheet over each other during handling.

